

## 4 Smart Products You Need in Your Labor & Delivery Suite



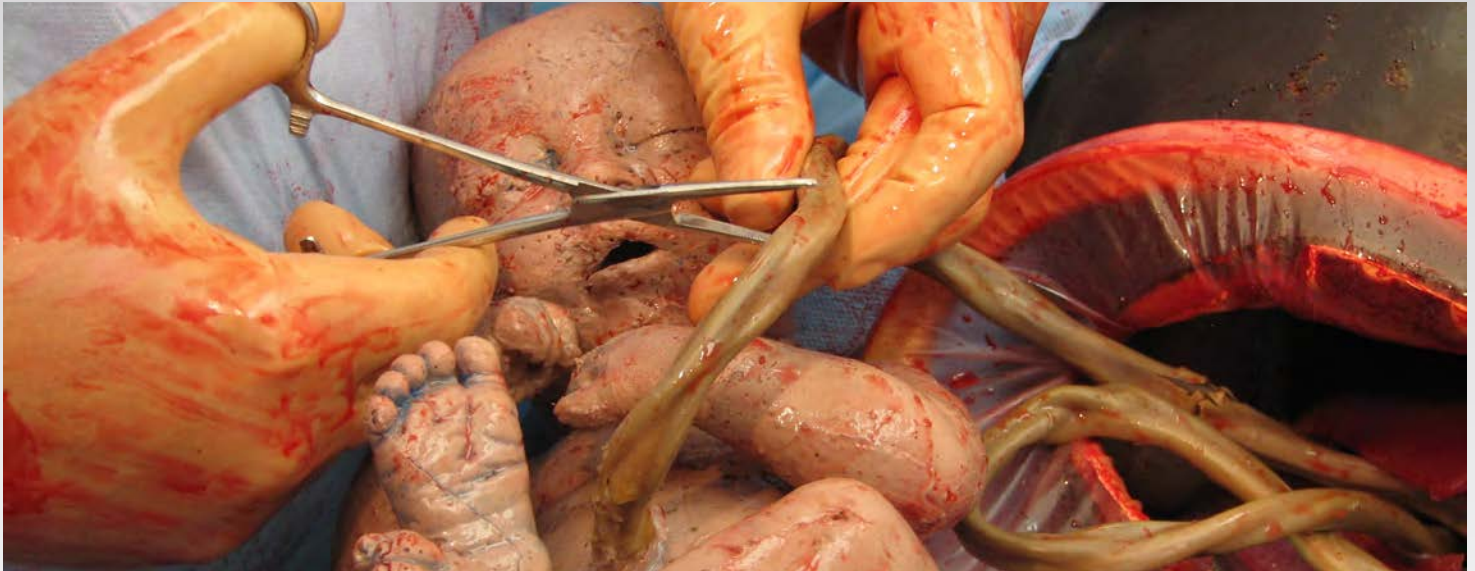
The world's only fully-operative emergency obstetrics training solution that delivers a true, hands-in-the-body surgical experience for mastering:

- + **Emergency C-Section Delivery**—enabling full transverse or vertical emergency C-Section and delivery procedures, featuring abdominal wall and uterine incision and repair.
- + **Fetal Extraction**—experience and practice difficult deliveries such as shoulder dystocia, breech, nuchal cord, prolapse arm and use of suction assist and forceps.
- + **Postpartum Hemorrhage Control**—practice hemorrhage control procedures, repair of complex lacerations and uterine artery injuries, hemorrhage control techniques including Bakri balloon, B-Lynch suture, Hayman suture and O'Leary stitch.
- + **Emergency Hysterectomy**—training for postpartum and caesarean hysterectomy procedures including hemorrhage control and fully-operable removal of the uterus.

Unprecedented  
anatomical and  
surgical fidelity

Use standard  
instruments to incise,  
dissect, retract and  
suture realistic tissue

Realistic simulated  
amniotic fluid  
and blood



# Emergency C-Section Delivery Simulator

The Emergency C-Section Delivery Simulator is designed to enable training in full transverse or vertical emergency C-Section through abdominal wall, muscle, fascia, linea, uterus and amniotic sac with baby, placenta and simulated amniotic fluid.

## Skills Taught

- Abdominal and uterine wall opening and closure
- Instrument assisted delivery
- Delivery of the placenta
- Teamwork and human factors training for an emergency C-Section

## Technical Specs

One C-Section Simulator Base  
(Part Number: OB-300-2000)

Two C-Section Uteri  
(Part Number: OB-300-2200)

Five Foam Abdomens  
(Part Number: OB-300-2300)

Two Babies with Umbilical Cord and Placenta  
(Part Number: OB-050-2925)

100 Amniotic Bags with Ties  
(Part Number: OB-400-0999)

One 16oz/473ml Bottle of Lubricant  
(Part Number: 220007)

One Tube of Silicone Glue  
(Part Number: OB-050-0998)

One Spare Hardware Kit  
(Part Number: OB-300-2400)

Dimensions:  
24"L x 24"W x 12"H (61cm x 61cm x 30cm)

Weight: 24lbs (11kg)





# Fetal Extraction Simulator

The Fetal Extraction Simulator is designed for clinicians and learners to experience and practice difficult deliveries. An open, post C-Section, abdomen featuring a low-transverse incision and uterus with a low transverse hysterotomy enables various extraction maneuvers and techniques including suction assist and forceps.

## Skills Taught

- Difficult deliveries such as shoulder dystocia, breech, nuchal cord and prolapse arm
- Instrument assisted delivery
- Delivery of the placenta
- Teamwork and human factors for fetal extraction from an emergency C-Section

## Technical Specs

One Fetal Extraction Simulator Base  
(Part Number: OB-500-2000)

Two Babies with Umbilical Cord and Placenta  
(Part Number: OB-050-2925)

One 16oz/473ml Bottle of Lubricant  
(Part Number: 220007)

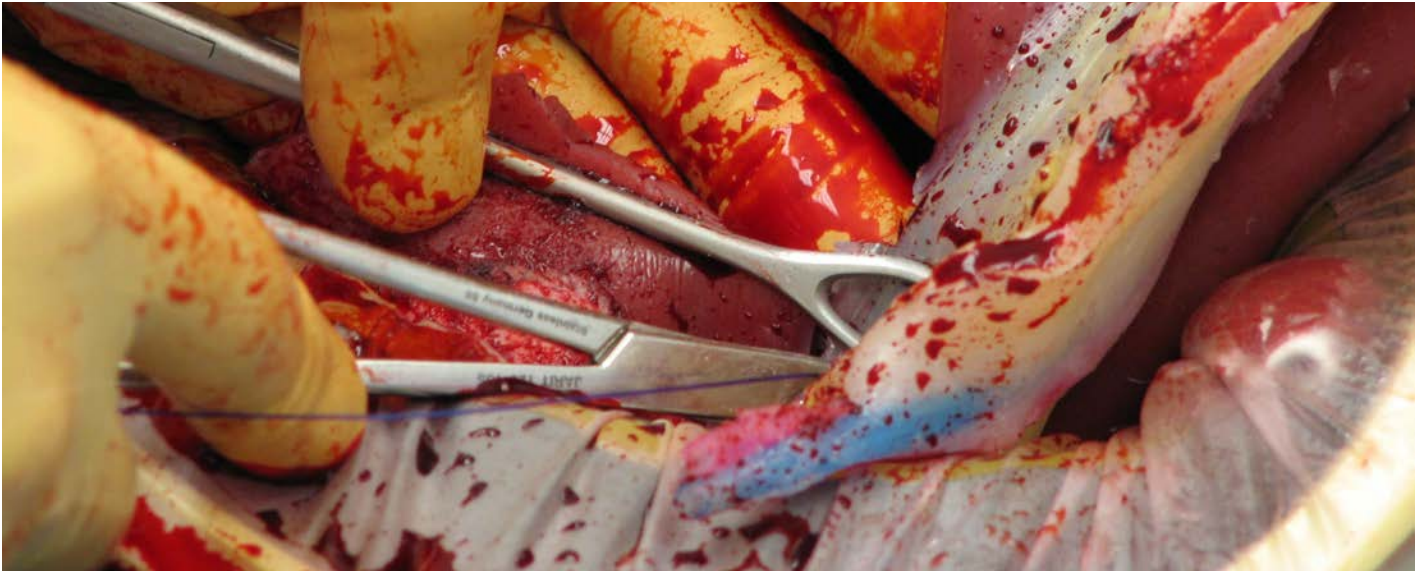
One Tube of Silicone Glue  
(Part Number: OB-050-0998)

One Spare Hardware Kit  
(Part Number: OB-300-2400)

Dimensions:  
24"L x 24"W x 12"H  
(61 cm x 61 cm x 30 cm)

Weight:  
39lbs (17.5kg)





# Postpartum Hemorrhage Control Simulator

The Postpartum Hemorrhage Control Simulator features an open abdomen with an integrated pressurized bleeding system for practicing hemorrhage control techniques including repair of complex lacerations and uterine artery injuries. An empty, durable, multi-use uterus enables scores of procedures before uterus replacement.

## Skills Taught

- Complex lacerations and uterine artery injuries
- Hemorrhage control techniques including Bakri balloon, B-Lynch suture, Hayman suture and O'Leary stitch
- Teamwork and human factors training for hemorrhage control in an emergency C-Section

## Technical Specs

One Postpartum Hemorrhage Simulator Base  
(Part Number: OB-100-2000)

Two Hemorrhage Control Multi-Use Uteri  
(Part Number: OB-100-2200)

One Open Abdomen  
(Part Number: OB-050-2500)

One Bag of Fake Blood  
(Part Number: OB-100-0750)

One Pressure Infuser Bag  
(Part Number: OB-050-0400)

One Set of Intestines  
(Part Number: OB-050-0300)

One 16oz/473ml Bottle of Lubricant  
(Part Number: 220007)

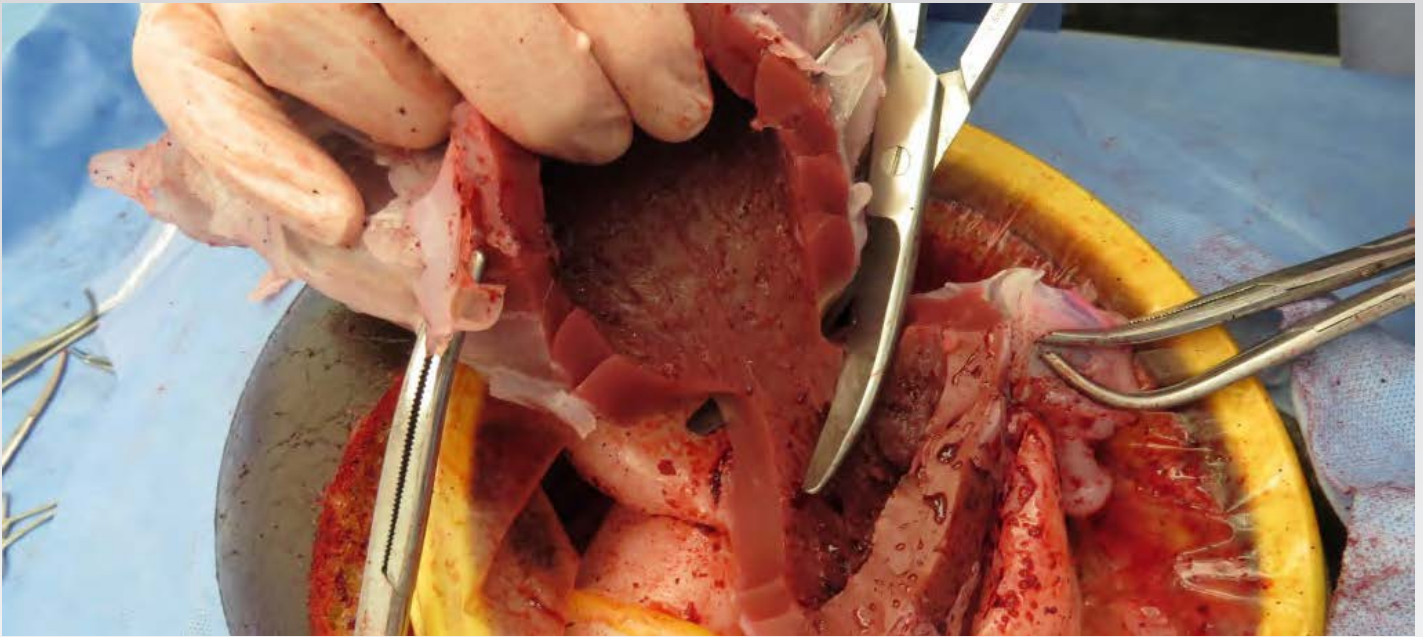
One Tube of Silicone Glue  
(Part Number: OB-050-0998)

One Spare Hardware Kit  
(Part Number: OB-100-2400)

Dimensions:  
24"L x 24"W x 12"H (61cm x 61cm x 30cm)

Weight: 48lbs (22kg)





# Emergency Hysterectomy Simulator

Open abdomen with integrated bleeding system, including a durable, flaccid, abdominal wall insert and attachable, partially contracted uterus. Model contains a uterus, ovaries, bladder, ureters and detailed representations of uterine arteries.

## Skills Taught

- Fully-operable removal of the uterus
- Teamwork and human factors training for a hysterectomy following an emergency C-Section

## Technical Specs

One Emergency Hysterectomy Simulator Base

(Part Number: OB-200-2000)

Ten Emergency Hysterectomy Uteri

(Part Number: OB-220-2201)

One Open Abdomen

(Part Number: OB-050-2500)

One Gallon of Artificial Blood

(Part Number: OB-200-0700)

One Blood Infusion Injector

(Part Number: OB-200-0750)

One Set of Intestines

(Part Number: OB-050-0300)

One 16oz/473ml Bottle of Lubricant

(Part Number: 220007)

One Spare Hardware Kit

(Part Number: OB-300-2400)

Dimensions:

24"L x 24"W x 12"H (61cm x 61cm x 30cm)

Weight: 46lbs (21kg)



# RealMom™ and C-Celia Emergency Obstetrics Suite

A complete and fully-integrated  
birthing experience.



Childbirth is a precious moment for mother and baby but when things do go wrong a prepared delivery team can mean the difference between life and death. It's critical that your learners train for and are prepared for any eventuality in the labor and delivery room.

With the RealMom vaginal delivery simulator and the C-Celia Emergency Obstetrics Suite, you can provide a **fully integrated and complete birthing experience** for your learners - from natural deliveries to fully-operative emergency C-Section, postpartum hemorrhage control and emergency hysterectomy.

Operative | Experience