



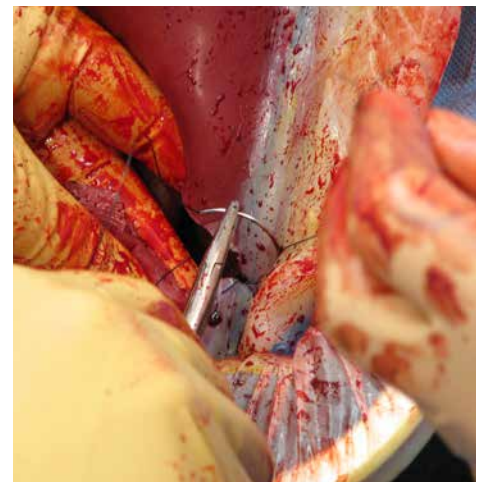
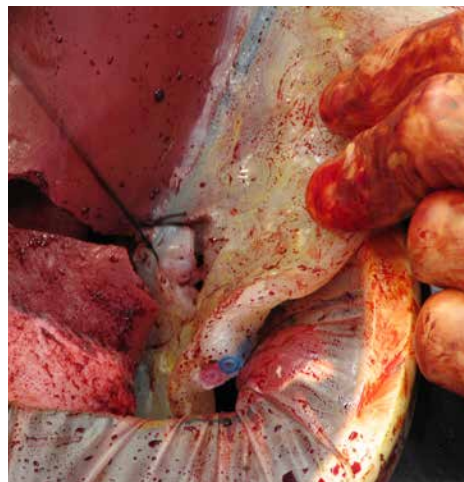
Emergency Obstetrics
Simulation Suite

Postpartum Hemorrhage
Control Simulator

Product Number: OB-100-2000

Table of Contents

SECTION 1: IMPORTANT INFORMATION	3
SECTION 2: Introduction	4
Skills Taught	4
Items Included.....	4
SECTION 3: Unpacking and Assembly	5
SECTION 4: Directions of Use	5
Preparing the Simulator.....	5
Install Uterus	6
Adding Intestines and Open Stomach	8
Infusing with Fake Blood	9
Pressurize Internal Fluid Reservoir	10
Bleeding the Simulator.....	10
SECTION 5: Care and Maintenance	11
Replacement Parts	11
Customer Support	11



Important Information

GENERAL WARNINGS

Warning: A poorly lubricated uterus may damage the Simulator during operation.

Only use the lubricant and simulated blood supplied with this product. Use of non-recommended fluid products may weaken or damage the simulator.

Lubrication is key to the usage of this product; inadequate lubrication could lead to tears or other damage to silicone parts. Apply at least 2-3 squirts of lubrication to the uterus before use.

It is vitally important that after each training session all lubrication is cleaned with a warm damp cloth. You can also use baby wipes to wipe away any excess lubricant.

Warning: Sharp objects, excessive force, or using non-OEI products can scratch, tear or damage the simulator.

Gloves should always be worn, and all jewelry items should be removed. Sharp surfaces such as finger nails and rings can sometimes lead to damage of silicone parts.

WARRANTY INFORMATION

WARRANTIES. EXCEPT AS OTHERWISE SET FORTH HEREIN, OPERATIVE EXPERIENCE, INC. ("OPERATIVE EXPERIENCE") PRODUCTS ARE SOLD ONLY WITH THE 1-YEAR LIMITED WARRANTY DESCRIBED BELOW. THIRD-PARTY PRODUCTS ARE EXPRESSLY EXCLUDED FROM THE BELOW LIMITED WARRANTY, AND ARE SUBJECT ONLY TO THOSE WARRANTIES EXTENDED BY THE APPLICABLE THIRD PARTY MANUFACTURERS OF SUCH PRODUCTS, IF ANY. EXCEPT WHERE PROHIBITED BY LAW OR AS OTHERWISE PROVIDED HEREIN, OPERATIVE EXPERIENCE HEREBY EXPRESSLY DISCLAIMS ALL WARRANTIES EITHER EXPRESS OR IMPLIED, INCLUDING WITHOUT LIMITATION, THE IMPLIED WARRANTIES OF MERCHANTABILITY, FITNESS FOR A PARTICULAR PURPOSE, NON-INFRINGEMENT, AND ANY WARRANTIES ARISING FROM A COURSE OF DEALING, COURSE OF PERFORMANCE, OR USAGE OF TRADE. OPERATIVE EXPERIENCE PERSONNEL, SUPPLIERS, AND LICENSEES ARE NOT AUTHORIZED TO ALTER THESE WARRANTIES.

Operative Experience warrants that its products ("Products") are free from defects in materials and workmanship, subject to specific limitations and conditions set forth below, for a period of one (1) year from the date of the original purchase by the first end-user (the "Warranty Period"). Claims of defect brought after the Warranty Period will not be covered by this limited warranty. In order to bring a claim under this limited warranty, the buyer must notify Operative Experience by email to info@operativeexperience.com, describing the defect in reasonable detail. If Operative Experience determines that such defect may be covered by this limited warranty, Operative Experience will issue a return material authorization ("RMA") to the buyer, and the buyer shall return the Product in question to Operative Experience using the instructions provided by Operative Experience. If Operative Experience, in its reasonable discretion, determines that a Product has a defect in materials or workmanship, Operative Experience shall, at its option, repair or replace the defective Product at no cost to the buyer. If identical materials are not available at the time of repair or replacement, Operative Experience may, at its option, substitute materials of comparable quality or refund buyers money. The Products are intended only for use in medical training, and this limited warranty shall not cover any Product used for commercial or other non-medical training purposes. Any alteration by buyer of a Product shall render this limited warranty void with respect to the altered Product. This limited warranty extends only to the original buyer and shall not cover defects or damages resulting from (i) accident, misuse, abuse, tampering, neglect, unusual physical stress, alteration, or improper operation or handling of the Product; (ii) incorrect or inadequate maintenance, cleaning, or care of the Product; or (iii) normal wear and tear of the Product. Operative Experience will not be responsible under this limited warranty or otherwise for defects or damage caused by any ancillary equipment not furnished by Operative Experience which is attached to or used in connection with the Products, and all such equipment is expressly excluded from this limited warranty. This limited warranty does not extend to consumable parts, such as batteries, or any third-party products that buyer may use or purchase in conjunction with the Products.

INTRODUCTION

The Postpartum Hemorrhage Control Simulator is an open abdomen simulator for practicing various hemorrhage control techniques for repair of complex lacerations and uterine artery injuries.

Pressurized bleeding system

Open abdomen with empty, durable, multi-use uterus enables scores of procedures before uterus placement

Supports hemorrhage control techniques including Bakri Balloon, B-Lynch suture, Hayman suture and O'Leary Stitch

Skills Taught

■ Repair of complex lacerations and uterine artery injuries.

■ Teamwork and human factors training in emergency Caesarean procedures.

Items Included

1 Simulator Base Assembly Part Number: PPH OB-100-2000	Qty: 1	6 Bag of Fake Blood Part Number: OB-100-0750	Qty: 1
2 Open Abdomen Part Number: OB-050-2500	Qty: 1	7 Intestines Part Number: OB-050-0300	Qty: 1
3 Hemorrhage Control Multi-Use Uterus Part Number: OB-100-2200	Qty: 2	8 Spare Hardware Kit Part Number: OB-300-2400	Qty: 1
4 Silicone Glue Part Number OB-050-0998	Qty: 1	9 Pressure Infuser Bag Part Number: OB-050-0400	Qty: 1
5 Lubricant, 16oz/473ml bottle Part Number: 220007	Qty: 1		

Unpacking and Assembly

NOTE: Use caution when opening the shipping carton, as this is the preferred storage container. Damage to the container could result in an inability to store it properly, leading to damage of the simulator and accessories.

C-Celia comes in a specially designed carton with cutouts in the internal foam that provide for placement of all parts and accessories. Keep all original shipping materials, including boxes.

When unpacking C-Celia for the first time, careful use of a box cutter protects both the packaging and the product.

It is recommended that you reserve a space approximately 24in/60cm by 72in/183cm into which you can place the contents of shipping carton. Remove each item in the carton and verify on the shipping paperwork that everything is included.

Directions for Use

Preparing the Simulator

Prior to simulating a procedure, the simulator needs to be fully lubricated.

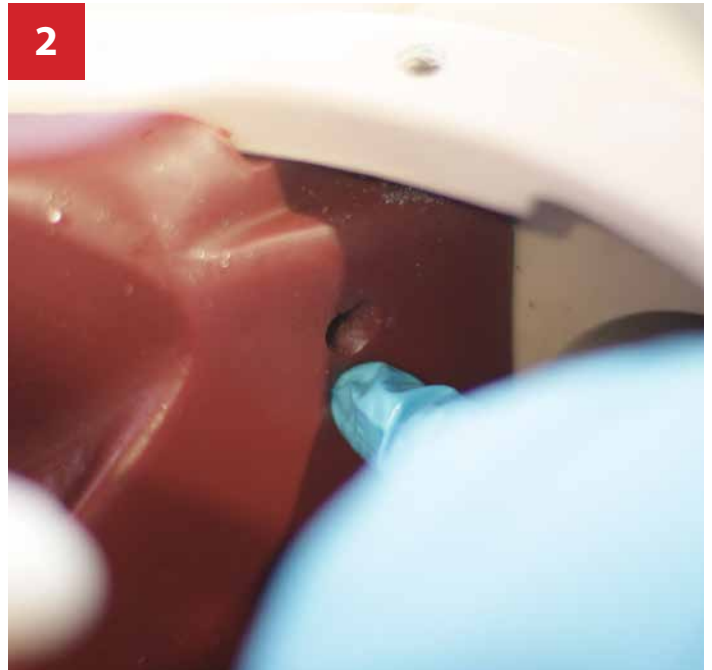
Using the lube provided, generously apply lube to all areas of the abdominal cavity using your hands.



Install Uterus



Lube uterus before inserting.



Locate hole in the abdomen.



Pull the tube and connector out of the hole and connect to the fitting on the uterus



Once connected, apply lube to the tubing and feed the tubing and the connectors back through the hole.

Install Uterus - continued



Carefully slide the uterus in place by pushing uterus into the pelvis.



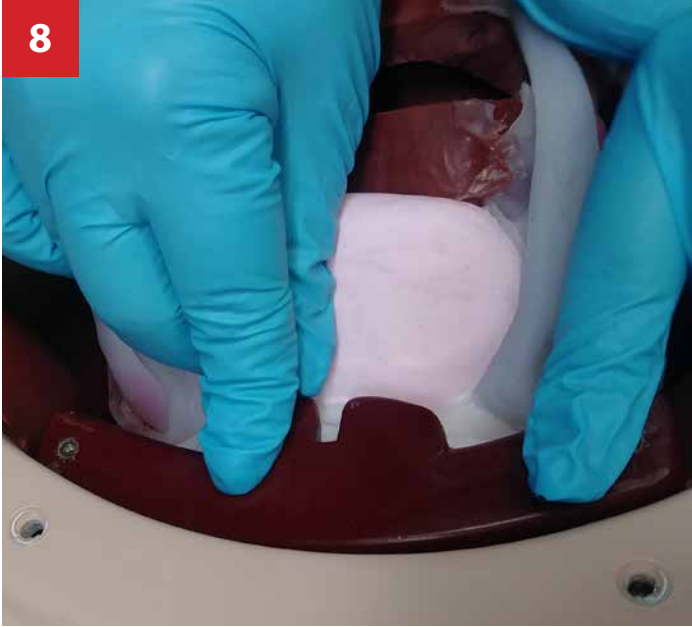
Make sure the uterus is properly positioned in the uterus.



Anchor the uterus in place using the uterus holder clip.

Place the clip rods into the guide holes in the uterus.

Install Uterus - continued



Once the clip is in the uterus push the clip under the Simulator trim and align the screw holes.



Using provided screws and screwdriver, screw the clip into place. Do not over tighten or cross thread.

Adding Intestines and Open Abdomen



Lubricate and place the intestines into the abdomen cavity under the uterus.



Position the abdomen over the simulator and feed the Velcro through the slit in the back and slide the pin at the bottom of the abdomen into the slot on the uterus clip to lock into place.

Infusing with Fake Blood



1 Remove the back door from simulator base and locate the blood fill port.



2 Connect the blood fill tube to the filled IV bag.



3 Connect the blood bag to the fill port.



4 Place the blood bag into the pressure infuser sleeve.



To Infuse

1. Close (turn to right) flow control knobs
2. Put internal reservoir hand-squeeze pump in deflate (left) position
3. Pump pressure cuff until blood IV bag is empty
4. Detach from fill port
5. Release pressure on cuff

Pressurize Internal Fluid Reservoir

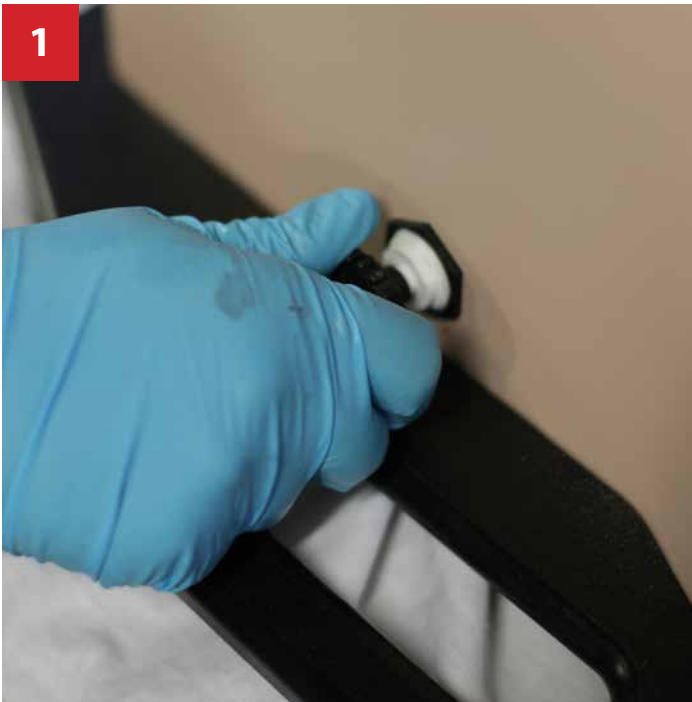


Turn flow control OFF (turn right) Set hand-squeeze pump to inflate

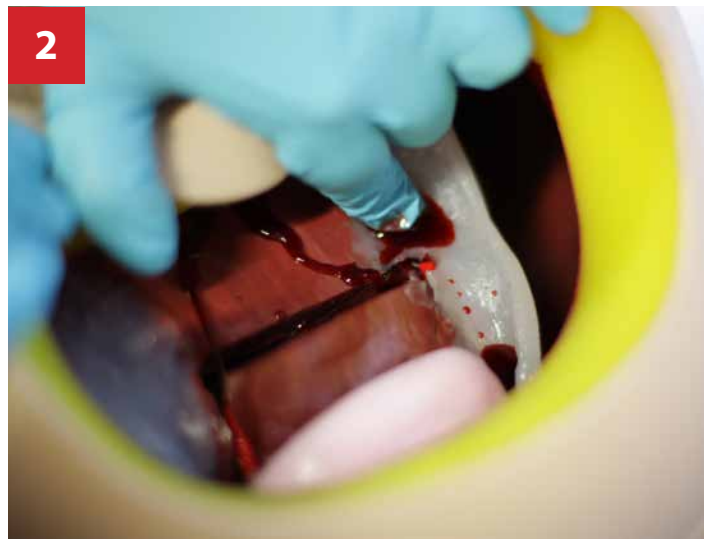


Pump hand-squeeze pump until pressure gauge shows green stripe.

Bleeding the Simulator



For arterial blood flow, turn blood flow valve to the left. Note a 1/4 turn will provide strong flow. There is a separate valve on each side of the simulator base.



Care and Maintenance

Surface

Use only on clean surface. Avoid felt tipped markers, ink pens, acetone, iodine or other staining products and avoid placing the module/manikin on newsprint or inked lines of any kind.

Lubrication

Cottonseed Oil should be used liberally to lubricate both the uterus and the inside of the abdominal cavity.

Storage

All fluid should be removed from the abdominal cavity before storage. All surface areas should be cleaned and dried before storage.

Cleaning

Simulators should be wiped clean with a solution of mild soap and water. Clean with mild soap and water; do not submerge simulator, module or parts in cleaning fluids or water. The entire model can be rinsed using a hose. Parts should be drained and air-dried thoroughly before storage and disinfected when needed.

Replacement Parts

Description	Part Number
Hemorrhage Control Multi Use Uterus	OB-100-2200
Intestines	OB-050-0300
Bag of Fake Blood	OB-100-0750
Lubricant	220007
Shell Door	OB-300-2005
Uterus Holder Clip	OB-300-2008
OB Spare Parts Kit	OB-300-2400

Customer Support

Simulators must be serviced by qualified OEI technicians only.

To schedule service, contact:

Operative Experience Inc.

500 Principio Parkway West, Suite 900

North East, MD 21901

Phone: 410-287-5748

Email: support@operativeexperience.com

