

USER GUIDE MANUAL



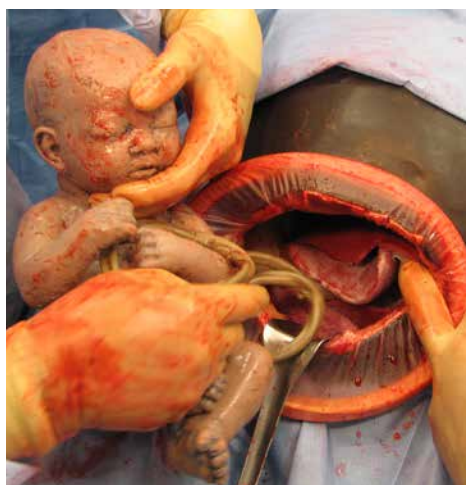
Emergency Obstetrics  
Simulation Suite

Emergency C-Section  
Delivery Simulator

Product Number: OB-300-2000

## Table of Contents

IMPORTANT INFORMATION.....	3
Introduction .....	4
Skills Taught .....	4
Items Included.....	4
Unpacking and Assembly .....	5
Directions for Use .....	5
Preparing the Simulator .....	5
Loading the Baby and Placenta Into the Uterus .....	5
Install Foam Abdomen .....	7
Repairing the Simulator After Use .....	8
Care and Maintenance .....	9
Replacement Parts .....	9
Customer Support .....	9



# Important Information

## GENERAL WARNINGS

---

**Warning: A poorly lubricated baby, placenta, uteri or abdominal cavity may result in damage to the simulator.**

Only use the lubricant and simulated blood supplied with this product. Use of non-recommended fluid products may weaken or damage the simulator.

Lubrication is key to the usage of this product; inadequate lubrication could lead to tears or other damage to silicone parts. Apply a minimum of 2-3 squirts of lubrication to the following areas:

- The baby's head, shoulders, body and limbs.
- Ensure the baby and placenta are well covered.

It is vitally important that after each training session all lubrication is cleaned with a warm damp cloth. You can also use baby wipes to wipe away any excess lubricant.

**Warning: Sharp objects, excessive force, or using non-OEI products can scratch, tear or damage the simulator.**

Gloves should always be worn, and all jewelry items should be removed. Sharp surfaces such as finger nails and rings can sometimes lead to damage of silicone parts.

## WARRANTY INFORMATION

---

WARRANTIES. EXCEPT AS OTHERWISE SET FORTH HEREIN, OPERATIVE EXPERIENCE, INC. ("OPERATIVE EXPERIENCE") PRODUCTS ARE SOLD ONLY WITH THE 1-YEAR LIMITED WARRANTY DESCRIBED BELOW. THIRD-PARTY PRODUCTS ARE EXPRESSLY EXCLUDED FROM THE BELOW LIMITED WARRANTY, AND ARE SUBJECT ONLY TO THOSE WARRANTIES EXTENDED BY THE APPLICABLE THIRD PARTY MANUFACTURERS OF SUCH PRODUCTS, IF ANY. EXCEPT WHERE PROHIBITED BY LAW OR AS OTHERWISE PROVIDED HEREIN, OPERATIVE EXPERIENCE HEREBY EXPRESSLY DISCLAIMS ALL WARRANTIES EITHER EXPRESS OR IMPLIED, INCLUDING WITHOUT LIMITATION, THE IMPLIED WARRANTIES OF MERCHANTABILITY, FITNESS FOR A PARTICULAR PURPOSE, NON-INFRINGEMENT, AND ANY WARRANTIES ARISING FROM A COURSE OF DEALING, COURSE OF PERFORMANCE, OR USAGE OF TRADE. OPERATIVE EXPERIENCE PERSONNEL, SUPPLIERS, AND LICENSEES ARE NOT AUTHORIZED TO ALTER THESE WARRANTIES.

Operative Experience warrants that its products ("Products") are free from defects in materials and workmanship, subject to specific limitations and conditions set forth below, for a period of one (1) year from the date of the original purchase by the first end-user (the "Warranty Period"). Claims of defect brought after the Warranty Period will not be covered by this limited warranty. In order to bring a claim under this limited warranty, the buyer must notify Operative Experience by email to [info@operativeexperience.com](mailto:info@operativeexperience.com), describing the defect in reasonable detail. If Operative Experience determines that such defect may be covered by this limited warranty, Operative Experience will issue a return material authorization ("RMA") to the buyer, and the buyer shall return the Product in question to Operative Experience using the instructions provided by Operative Experience. If Operative Experience, in its reasonable discretion, determines that a Product has a defect in materials or workmanship, Operative Experience shall, at its option, repair or replace the defective Product at no cost to the buyer. If identical materials are not available at the time of repair or replacement, Operative Experience may, at its option, substitute materials of comparable quality or refund buyers money. The Products are intended only for use in medical training, and this limited warranty shall not cover any Product used for commercial or other non-medical training purposes. Any alteration by buyer of a Product shall render this limited warranty void with respect to the altered Product. This limited warranty extends only to the original buyer and shall not cover defects or damages resulting from (i) accident, misuse, abuse, tampering, neglect, unusual physical stress, alteration, or improper operation or handling of the Product; (ii) incorrect or inadequate maintenance, cleaning, or care of the Product; or (iii) normal wear and tear of the Product. Operative Experience will not be responsible under this limited warranty or otherwise for defects or damage caused by any ancillary equipment not furnished by Operative Experience which is attached to or used in connection with the Products, and all such equipment is expressly excluded from this limited warranty. This limited warranty does not extend to consumable parts, such as batteries, or any third-party products that buyer may use or purchase in conjunction with the Products.

# INTRODUCTION

The Emergency C-Section Delivery Simulator is designed to enable training in full transverse or vertical emergency c-section through abdominal wall, muscle, fascia, linea, uterus and amniotic sack with baby, placenta and simulated amniotic fluid.

## Skills Taught

---

- Abdominal and uterine wall opening and closure
- Instrument assisted delivery
- Delivery of the placenta
- Teamwork and human factors training emergency Caesarean section

## Items Included

---

<b>1</b> C-Section Simulator Base Assembly Part Number: OB-300-2000	Qty: 1	<b>5</b> Silicone Glue Part Number: OB-050-0998	Qty: 1
<b>2</b> C-Section Uterus Part Number: OB-300-2200	Qty: 2	<b>6</b> Lubricant, 16oz/473ml bottle Part Number: 220007	Qty: 1
<b>3</b> Foam Abdomens Part Number: OB-300-2300	Qty: 5	<b>7</b> Amniotic bags with ties Part Number: OB-400-0999	Qty: 100
<b>4</b> Small Baby Part Number: OB-050-2925	Qty: 2	<b>8</b> Spare Hardware Kit Part Number: OB-300-2400	Qty: 1

# Unpacking and Assembly

---

**NOTE: Use caution when opening the shipping carton, as this is the preferred storage container. Damage to the container could result in an inability to store it properly, leading to damage to the simulator and accessories.**

C-celia comes in a specially designed carton with cutouts in the internal foam that provide for placement of all parts and accessories. Keep all original shipping materials, including boxes.

When unpacking C-Celia for the first time, careful use of a box cutter protects both the packaging and the product.

It is recommended that you reserve a space approximately 24in/60cm by 72in/183cm into which you can place the shipping carton for storage. Remove each item in the carton and verify, on the shipping paperwork, that everything is included.

## Directions for Use

---

### Preparing the Simulator

Prior to simulating a delivery, the simulator needs to be fully lubricated before use.

Using the lube provided, generously apply lube to the abdominal cavity and apply to all areas of the cavity using your hands.



### Loading the Baby and Uterus Into the Simulator

**To load the baby and placenta:**

Generously lubricate the baby and placenta.



Using the provided amniotic bags place the baby and placenta into the bag in the position you want to simulate.



Once baby and placenta are in the amniotic bag, fill it approximately half way with water.



Carefully squeeze the bag to remove as much of the air in the bag as possible.

Then close the bag using the provided zip ties.



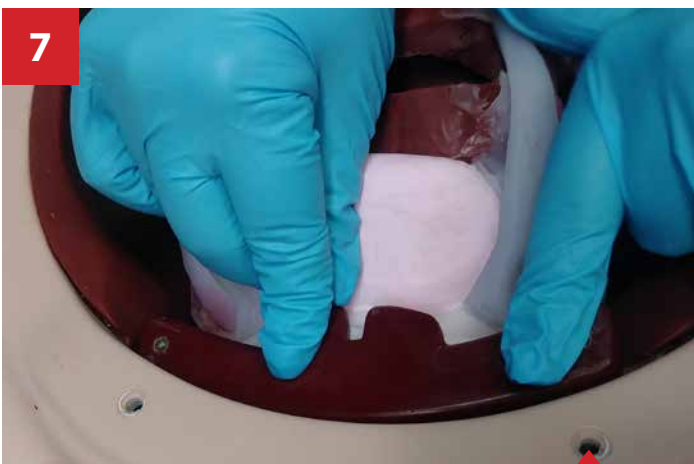
Carefully place the bagged baby into the lubricated uterus.



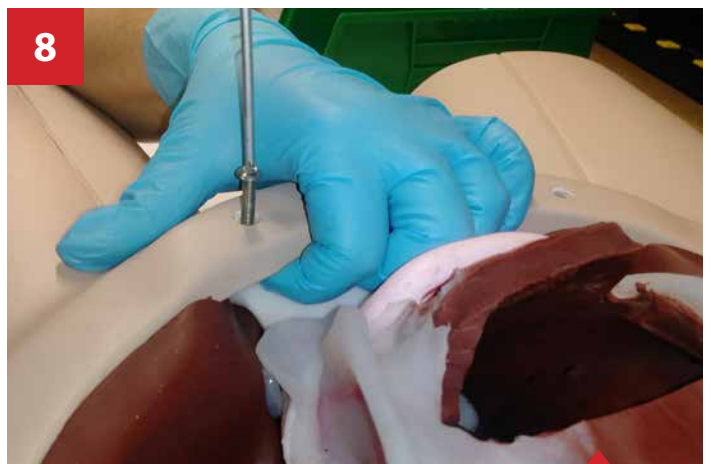
Load the uterus into the abdominal cavity of the simulator.



Place the uterus clip pins into the uterus base.

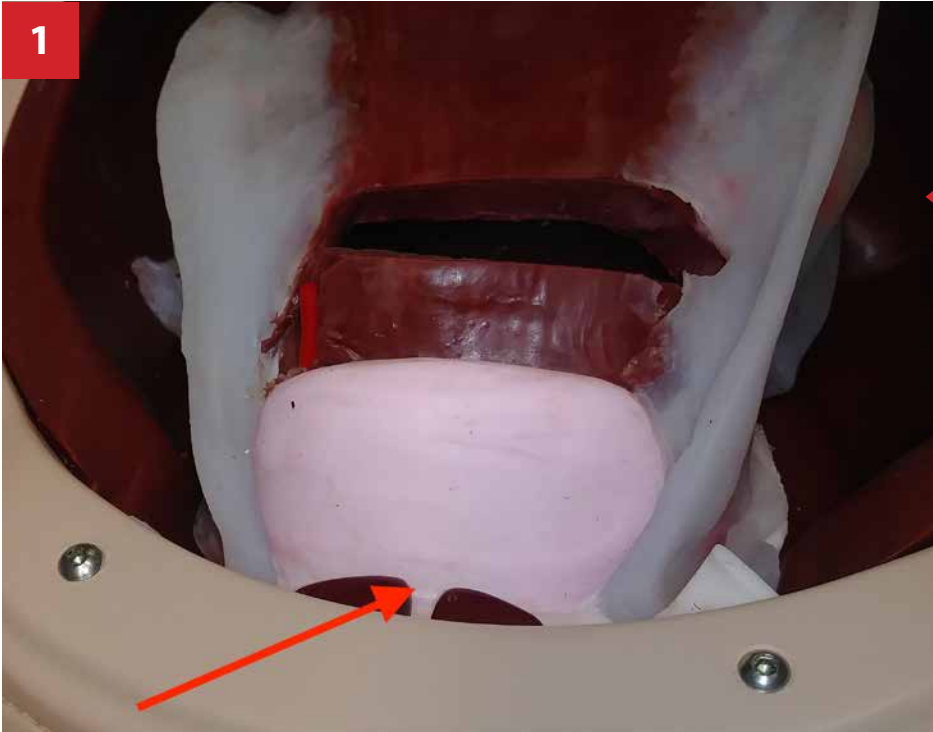


Slide the clip and uterus base under the lip of the simulator shell and align with the screw holes.

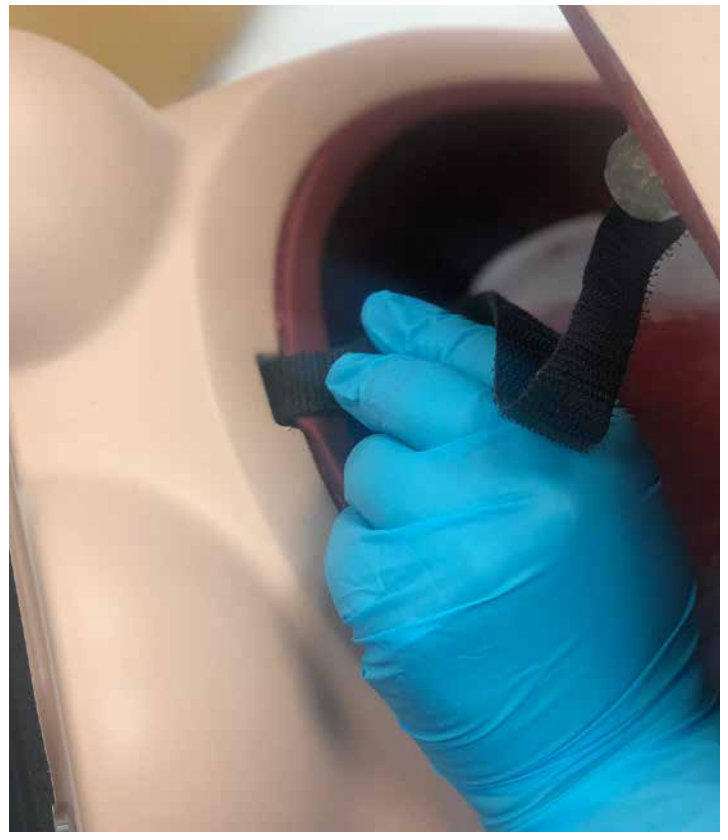


Use the screws to anchor the uterus in place.

## Install Foam Abdomen



Align foam abdomen with the unit and slide into place by holding the abdomen in a downward angle and insert the locking pin into the slot in the uterus clip. Then lower the upper half of the abdomen into its location.



Secure the top of the foam abdomen using the attached velcro strap.



Feed the Velcro strap back into the simulator base and secure tightly. The simulator is now ready to use.

## Repairing the Simulator After Use

### Repairing the Uterus

#### Materials needed

- Paper towels
- Popsicle Sticks
- Acetone
- Silicone Glue
- Pins

#### Gluing cuts back together

1. Clean the uterus with dry paper towels to remove as much lubricant as possible.
2. Clean entire area that needs to be repaired with Acetone. Let dry.
3. Using a popsicle stick apply a thin layer of the Silicone Glue along the inside of the incision.
4. Carefully line the edges of the incision together and place pins through both sides to hold in place.
5. Allow the Silicone Glue to dry for about 25 minutes or 5 mins with a hairdryer or heat gun.
6. Remove the pins

### Repairing the Umbilical Cord

#### Materials needed

- Paper towels
- Popsicle Sticks
- Acetone
- Silicone Glue
- Pins

#### Gluing the cut back together

1. Using paper towels clean off all lubricant from the umbilical cord.
2. Clean the entire area on the umbilical cord that needs to repair with Acetone. Let dry
3. Using a popsicle stick or a gloved hand apply a thin layer of Silicone Glue to the two cut ends.
4. Using the pins put 2-3 through both sides of the cord to hold in place and let dry.
5. Allow the Silicone Glue to dry for about 25 minutes or 5 mins with a hairdryer or heat gun.
6. Remove the pins



# Repairing the foam Abdomen

## Materials needed

- Paper towels
- Popsicle Sticks
- Acetone
- Silicone Glue
- Pins

## Gluing the cut back together

1. Using paper towels clean off any and all lubricant from the abdomen.
2. Clean the entire area on the abdomen that needs to be repaired with Acetone. Let dry.

3. Using a popsicle stick apply a thin layer of the Silicone Glue along the inside of the incision.
4. Carefully line the edges of the incision together and place pins through both sides to hold in place.
5. Allow the Silicone Glue to dry for about 25 minutes or 5 mins with a hairdryer or heat gun.
6. Remove the pins

# Care and Maintenance

## Surface

Use only on clean surface. Avoid felt tipped markers, ink pens, acetone, iodine or other staining products and avoid placing the module/manikin on newsprint or inked lines of any kind.

## Lubrication

The provided lubricant should be applied liberally to the baby and placenta and the inside of the abdominal cavity.

## Storage

All fluid should be removed from the abdominal cavity before storage. All surface areas should be cleaned and dried before storage.

## Cleaning

Simulators should be wiped clean with a solution of mild soap and water. Clean with mild soap and water; do not submerge simulator, module or parts in cleaning fluids

or water. The entire model can be rinsed using a hose. Parts should be drained and air-dried thoroughly before storage and disinfected when needed.

## Replacement Parts

Description	Part Number
Shell door	OB-300-2005
Uterus Holder Clip	OB-300-2008
C-Section Uterus	OB-300-2200
Foam Abdomens	OB-300-2300
Small baby	OB-050-2926
OB Spare Parts Kit	OB-300-2400

# Customer Support

Simulators must be serviced by qualified OEI technicians only.

To schedule service, contact:

Operative Experience Inc.

500 Principio Parkway West, Suite 900

North East, MD 21901

Phone: 410-287-5748

Email: support@operativeexperience.com

Operative Experience