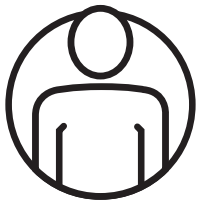


Tactical Hemorrhage Control Trainer

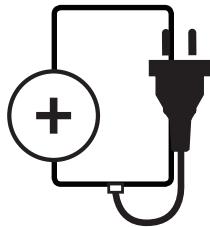
QUICK START GUIDE

To get started, please follow these easy steps:

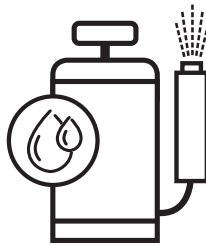
1 Equipment Identification



+ Simulator



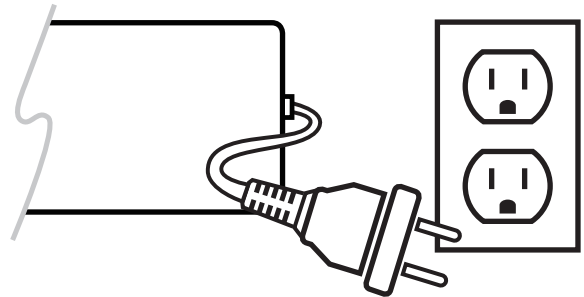
+ Battery Pack and Charger



+ Hand Pump (for blood)

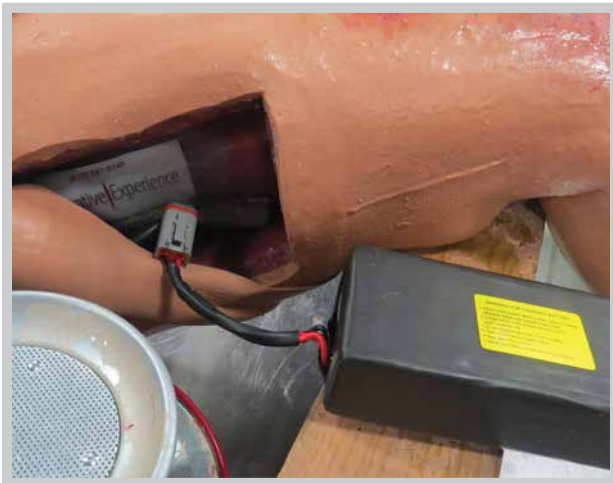
2 Charge Battery

- + Plug into a standard electrical outlet. The red light indicates charging.
- + Charge the batteries for 6 to 8 hours (or overnight). The indicator light turns green when the batteries are fully charged.



3 Install Battery

- + To install the battery pack, remove the skin cover on the upper left thigh to access and open the compartment. Then, attach the pack to the connector, and after resetting the pack in the compartment, close the compartment and replace the skin.



4 Add Blood to the Simulator

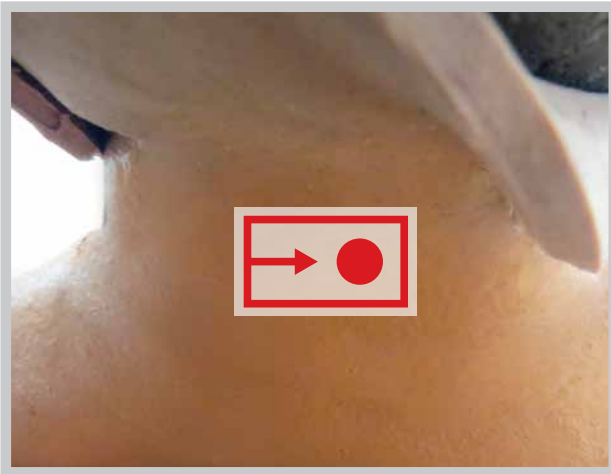
- + Fill the reservoir on the hand pump with simulated blood.
- + Lift the penis and extend the blood fill port.
- + Attach the blood fill hose by snapping onto the blood fill port on the simulator located under the penis. (Be sure the hose nozzle is free of debris.)
- + Retract the handle and pump approximately three times or until the simulator's blood reservoir is full.



Tactical Hemorrhage Control Trainer QUICK START GUIDE

5 Powering On

- + Flip the switch to the right underneath the skin in the back of the neck.
- + Allow simulator to cycle through the powering up sequence



6 Running the Blood

- + Use the remote "key fob" controller to turn the blood flow on and off.



Questions and Support

Contact us if you have a question or need help with your simulator.

Phone: (410) 287-5748

Email: support@operativeexperience.com

Operative Experience